

Weekly Performance Measures Report

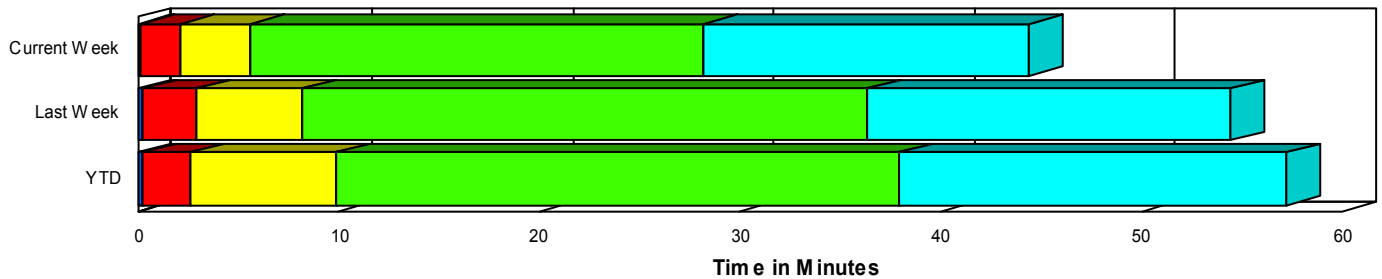
Period From Jul 8, 2007 to Jul 14, 2007

Created on:
July 16, 2007
9:36 am

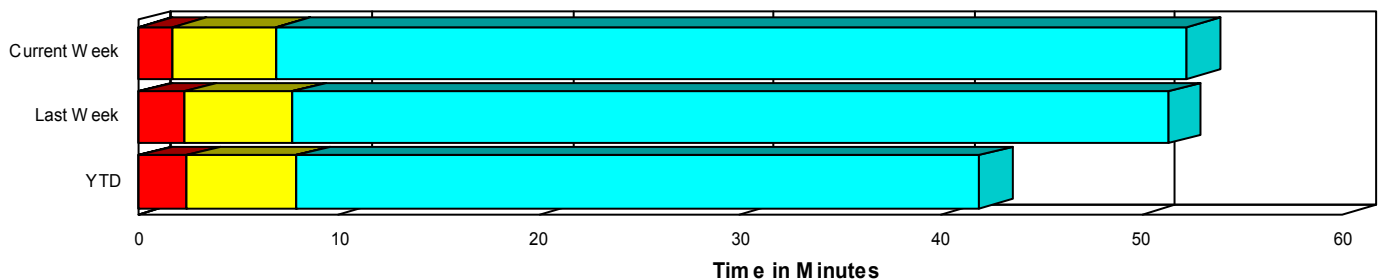
Performance Measures Summary

	Traffic Events (No Lanes Blocked)			Incidents (Lanes Blocked)		
	<u>This Week</u>	<u>Last Week</u>	<u>YTD</u>	<u>This Week</u>	<u>Last Week</u>	<u>YTD</u>
Number of Events	1,336	1,152	30,672	49	56	1,483
TMC Detection (min.)	0.03	0.03	0.04	0.11	0.25	0.25
TMC Verification (min.)	1.74	2.25	2.36	1.99	2.71	2.37
TMC Response (min.)	7.02	8.02	8.07	5.54	8.01	9.66
RR Dispatch Time (min.)	2.02	1.76	2.00	1.42	2.67	2.49
RR Response Time (min.)	5.18	6.40	6.20	4.11	5.33	7.18
Roadway Clearance (min.)				27.70	35.99	37.56
Event Clearance (min.)	52.36	51.64	42.08	43.92	54.15	56.14
# of Events w/ RR/SIRV	1,086	867	24,516	48	55	1,427
RR/SIRV Responses	1,122	902	25,289	91	106	2,369
RR/SIRV Activities	1,159	949	26,296	99	107	2,532

Incident Clearance TimeLine



Traffic Event(Non-Lane Blockage) Time-Line



■ Avg. TMC Detection Time	■ Avg. Time from TMC Response to Roadway Clearance*
■ Avg. Time from TMC Detection to TMC Verification	■ Avg. Time from Roadway Clearance to Incident/Event Clearance**
■ Avg. Time from TMC Verification to TMC Response	

* Roadway clearance equals all travel lanes open

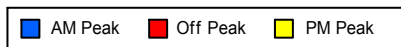
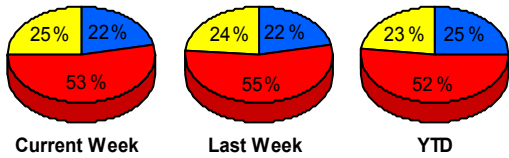
** Incident clearance equals time when last responder has left the scene

Performance Measures by Peak Period

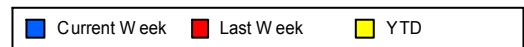
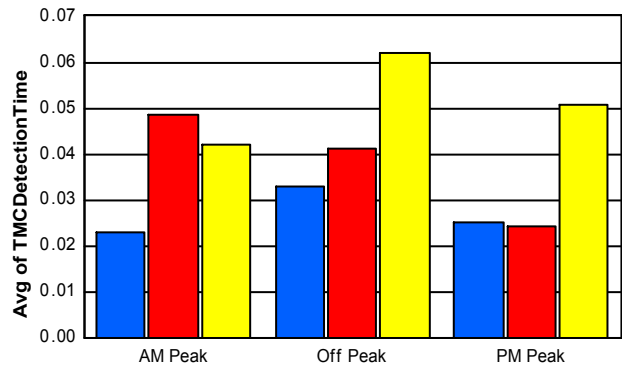
Note: AM peak period is defined as 6am to 10am and PM peak period is defined as 3pm to 7pm.

	AM Peak			Off Peak			PM Peak		
	<u>Current Week</u>	<u>Last Week</u>	<u>YTD</u>	<u>Current Week</u>	<u>Last Week</u>	<u>YTD</u>	<u>Current Week</u>	<u>Last Week</u>	<u>YTD</u>
Number of Events	304	261	8,034	736	661	16,586	345	286	7,535
Number of Incidents	12	13	328	23	30	772	14	13	383
TMC Detection (min.)	0.02	0.05	0.04	0.03	0.04	0.06	0.03	0.02	0.05
TMC Verification (min.)	0.73	2.00	1.43	2.47	2.57	2.81	1.10	1.82	2.36
TMC Response (min.)	5.78	9.16	6.63	8.24	7.47	9.18	5.33	8.18	7.62
RR Dispatch Time (min.)	1.44	2.30	1.47	2.53	1.60	2.30	1.36	1.81	2.02
RR Response Time (min.)	4.52	7.01	5.30	5.86	6.01	6.98	4.19	6.43	5.76
Event Clearance (min.)	30.19	61.40	35.03	58.68	46.12	48.80	57.22	55.99	37.59
Roadway Clearance (min.)	35.39	25.78	32.35	26.77	38.81	42.05	22.64	39.70	32.98
Incident Clearance (min.)	48.11	60.63	55.56	42.26	53.11	60.15	43.05	50.05	48.54
# of Events w/ RR/SIRV	266	219	6,749	592	507	13,111	276	196	6,083
RR/SIRV Responses	287	249	7,191	627	548	13,987	299	211	6,480
RR/SIRV Activities	295	258	7,494	650	570	14,597	313	228	6,737

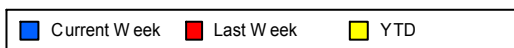
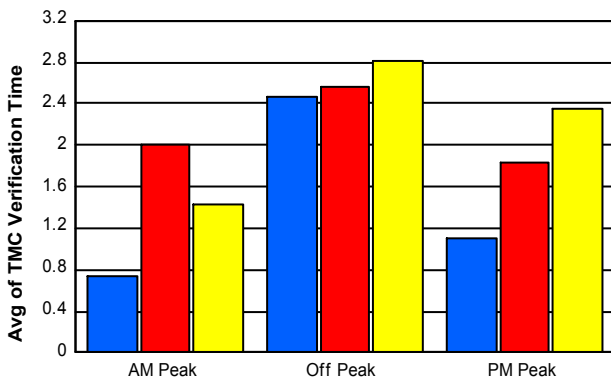
Number of Events / Peak Period



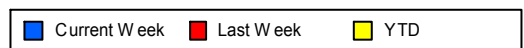
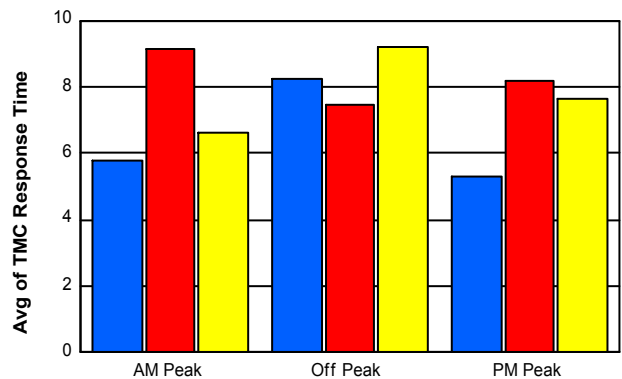
TMC Detection Time



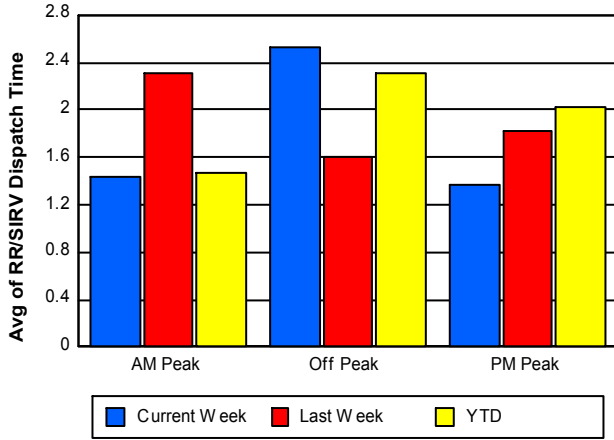
TMC Verification Time



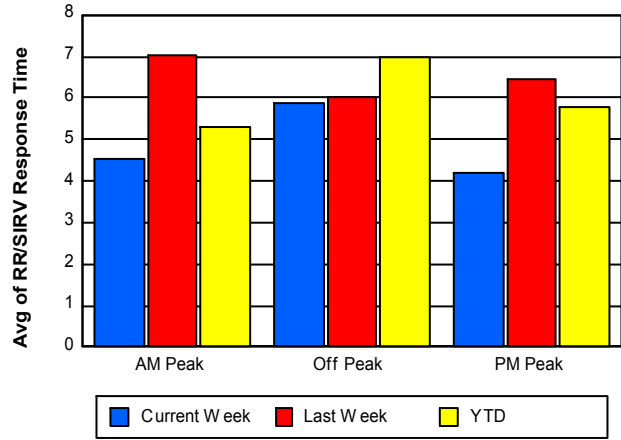
TMC Response Time



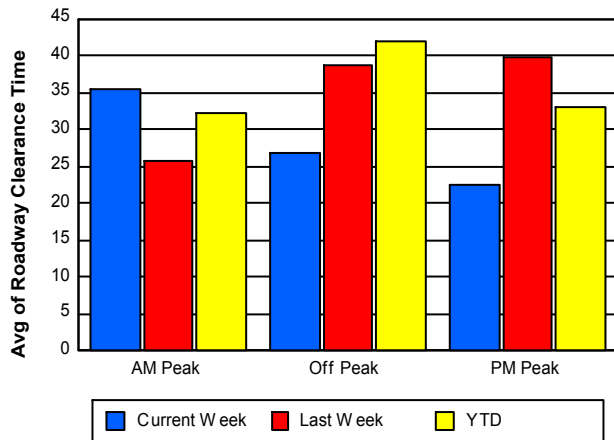
Road Ranger / SIRV Dispatch Time



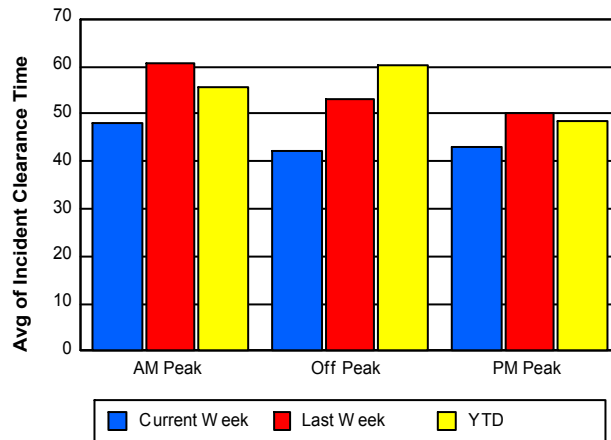
Road Ranger / SIRV Response Time



Roadway Clearance Time (2A)



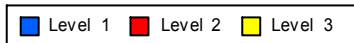
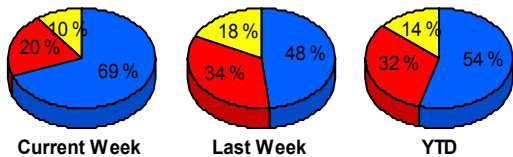
Incident Clearance Time (3B)



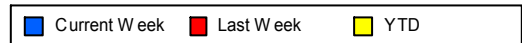
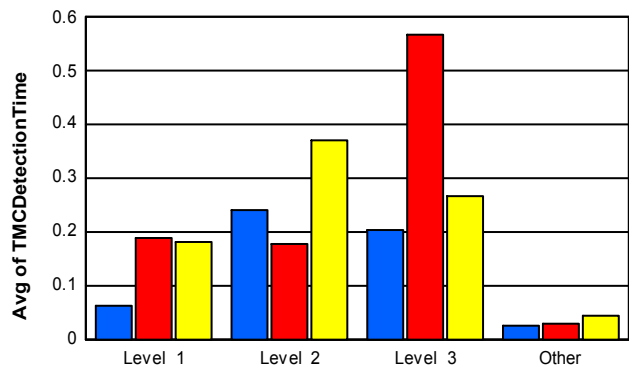
Performance Measures by Severity

	Level 1			Level 2			Level 3			Other		
	<u>This Week</u>	<u>Last Week</u>	<u>YTD</u>	<u>This Week</u>	<u>Last Week</u>	<u>YTD</u>	<u>This Week</u>	<u>Last Week</u>	<u>YTD</u>	<u>This Week</u>	<u>Last Week</u>	<u>YTD</u>
Number of Events	34	27	808	10	19	468	5	10	207	1,336	1,152	30,672
Number of Incidents	34	27	808	10	19	468	5	10	207	0	0	0
TMC Detection (min.)	0.06	0.19	0.18	0.24	0.18	0.37	0.20	0.57	0.27	0.03	0.03	0.04
TMC Verification (min.)	2.15	1.47	1.61	1.23	4.80	3.07	2.42	2.10	3.74	1.74	2.25	2.36
TMC Response (min.)	6.41	7.49	8.42	3.79	10.32	11.37	3.26	4.97	10.50	7.02	8.02	8.07
RR Dispatch Time (min.)	1.56	2.53	2.15	1.33	3.67	2.79	0.74	1.15	3.11	2.02	1.76	2.00
RR Resp. Time (min.)	4.85	4.96	6.28	2.46	6.65	8.57	2.52	3.82	7.41	5.18	6.40	6.20
Event Clearance (min.)	32.27	36.90	37.40	68.27	59.37	67.63	74.44	90.81	103.28	52.36	51.64	42.08
Roadway Clear. (min.)	14.10	16.03	15.13	52.89	48.97	52.73	69.85	65.22	90.87			
Incident Clearance (min.)	32.27	36.90	37.40	68.27	59.37	67.63	74.44	90.81	103.28			
# of Events w/ RR/SIRV	33	26	764	10	19	462	5	10	201	1,086	867	24,516
RR/SIRV Responses	51	36	1,037	28	45	829	12	25	503	1,122	902	25,289
RR/SIRV Activities	58	37	1,115	28	45	865	13	25	552	1,159	949	26,296

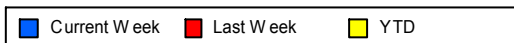
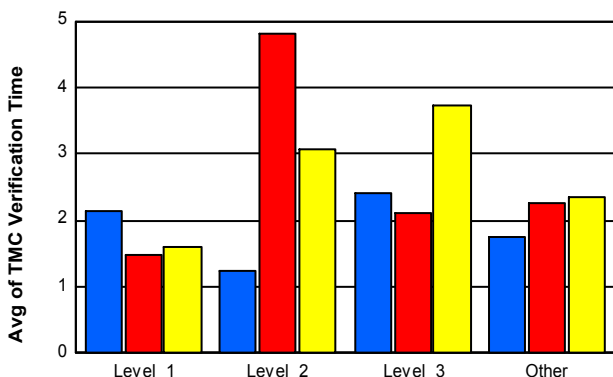
Number of Events / Severity



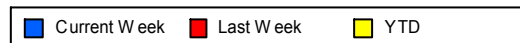
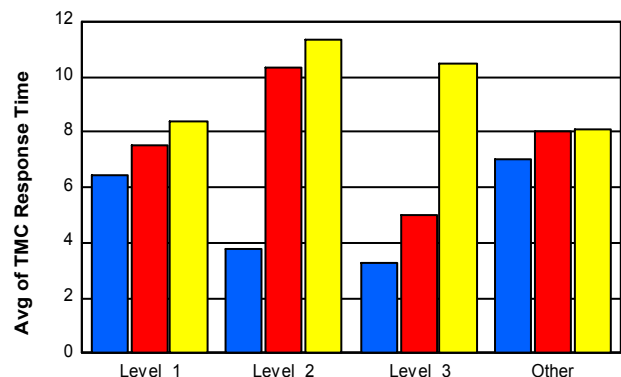
TMC Detection Time



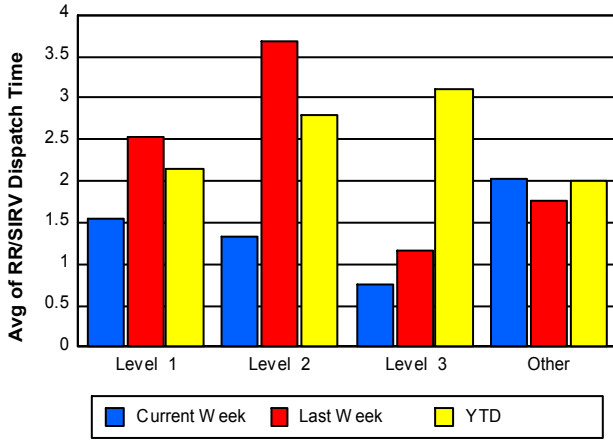
TMC Verification Time



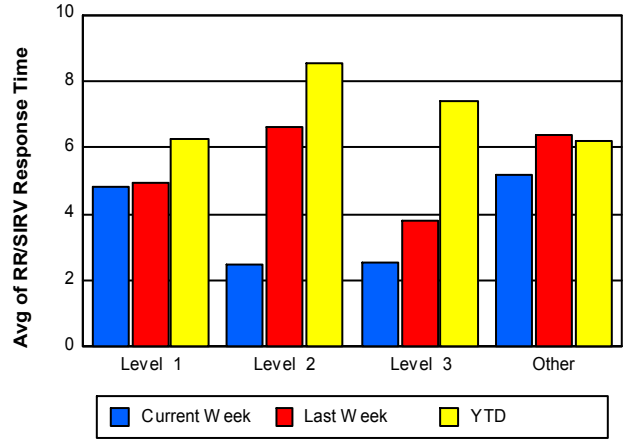
TMC Response Time



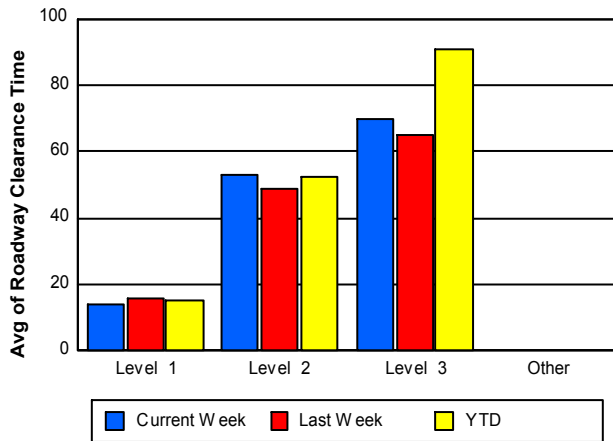
Road Ranger / SIRV Dispatch Time



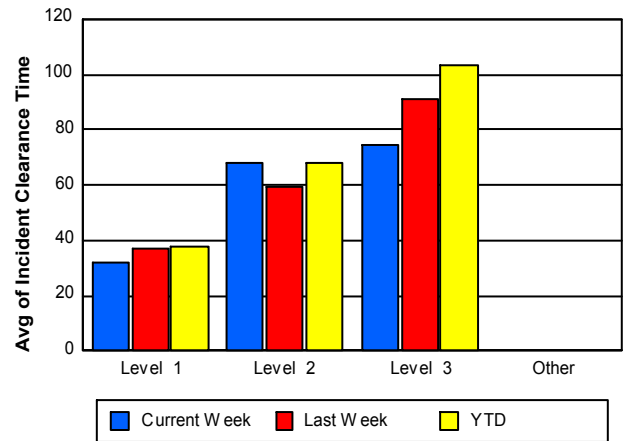
Road Ranger / SIRV Response Time



Roadway Clearance Time (2A)



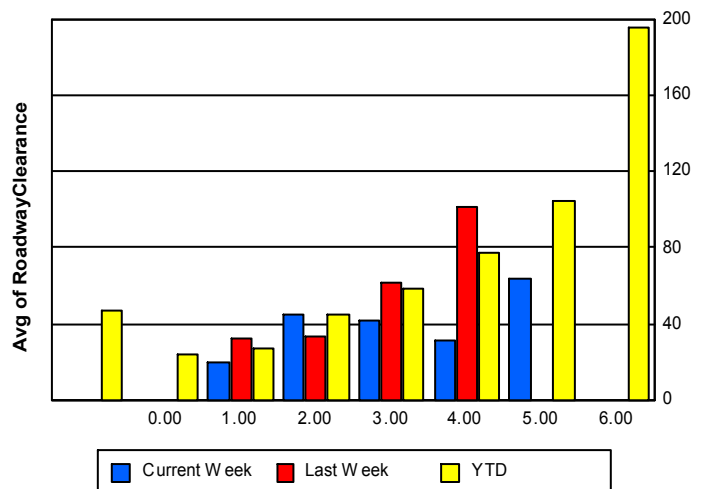
Incident Clearance Time (3B)



Roadway Clearance by Maximum Number of Lanes Blocked

	Current Week	Last Week	YTD
			46.32
0			23.56
1	20.13	31.64	27.34
2	45.07	33.57	44.53
3	41.68	61.79	58.50
4	30.62	101.22	76.81
5	63.08	0.00	104.52
6	0.00	0.00	195.79

Roadway Clearance Time (2A) by Max. # Lanes Blocked



Performance Measures by Roadway

595

	<u>Current Week</u>	<u>Last Week</u>	<u>YTD</u>
Number of Events	221	214	5,021
Number of Incidents	10	12	236
TMC Detection (min.)	0.04	0.05	0.07
TMC Verification (min.)	2.66	1.97	2.81
TMC Response (min.)	5.10	5.78	7.39
RR Dispatch Time (min.)	1.75	1.25	1.85
RR Resp. Time (min.)	3.56	4.59	5.69
Event Clearance (min.)	59.61	48.61	41.17
Roadway Clear. (min.)	21.58	43.09	42.74
Incident Clearance (min.)	34.02	65.70	60.27
# of Events w/ RR/SIRV	195	171	4,111
RR/SIRV Responses	203	193	4,404
RR/SIRV Activities	209	205	4,583

75

	<u>Current Week</u>	<u>Last Week</u>	<u>YTD</u>
Number of Events	191	130	4,120
Number of Incidents	2	4	104
TMC Detection (min.)	0.03	0.03	0.07
TMC Verification (min.)	1.84	2.68	3.64
TMC Response (min.)	2.13	3.13	4.20
RR Dispatch Time (min.)	0.54	0.66	1.35
RR Resp. Time (min.)	1.59	2.47	2.87
Event Clearance (min.)	90.99	70.45	46.87
Roadway Clear. (min.)	21.63	47.51	62.64
Incident Clearance (min.)	28.81	61.67	74.26
# of Events w/ RR/SIRV	183	124	3,995
RR/SIRV Responses	190	135	4,206
RR/SIRV Activities	192	143	4,411

95

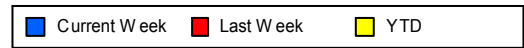
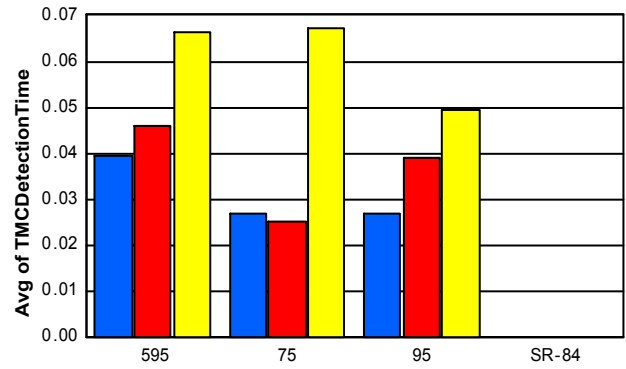
	<u>Current Week</u>	<u>Last Week</u>	<u>YTD</u>
Number of Events	973	864	23,013
Number of Incidents	37	40	1,143
TMC Detection (min.)	0.03	0.04	0.05
TMC Verification (min.)	1.53	2.28	2.03
TMC Response (min.)	8.60	9.60	9.22
RR Dispatch Time (min.)	2.37	2.15	2.19
RR Resp. Time (min.)	6.40	7.58	7.14
Event Clearance (min.)	42.71	49.73	42.33
Roadway Clear. (min.)	29.69	32.71	34.21
Incident Clearance (min.)	47.42	49.93	53.64
# of Events w/ RR/SIRV	756	627	17,837
RR/SIRV Responses	820	680	19,048
RR/SIRV Activities	857	708	19,834

	<u>YTD</u>
Number of Events	1
Number of Incidents	0
TMC Detection (min.)	0.00
TMC Verification (min.)	1.08
TMC Response (min.)	
RR Dispatch Time (min.)	
RR Resp. Time (min.)	
Event Clearance (min.)	3.77
Roadway Clear. (min.)	
Incident Clearance (min.)	
# of Events w/ RR/SIRV	0
RR/SIRV Responses	0
RR/SIRV Activities	0

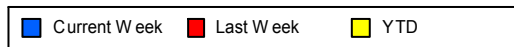
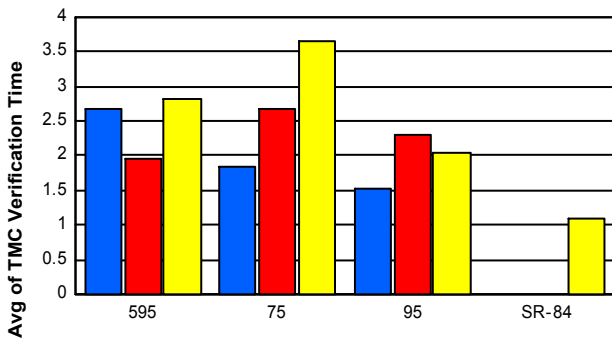
Number of Events / Roadway



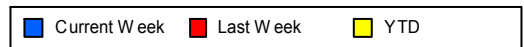
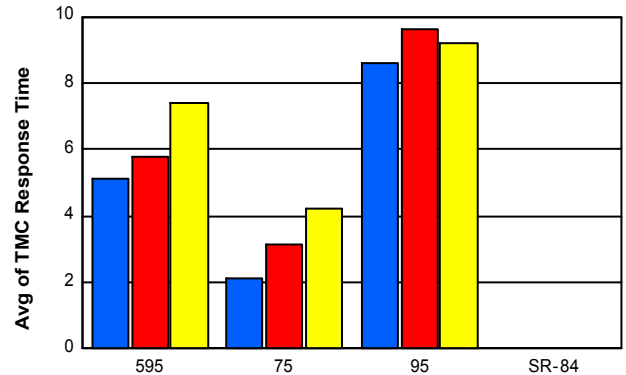
TMC Detection Time



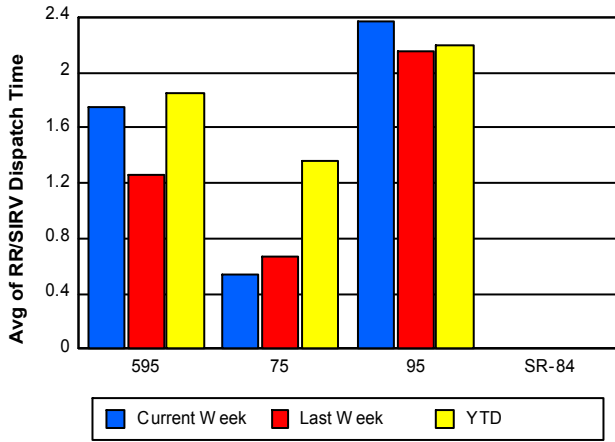
TMC Verification Time



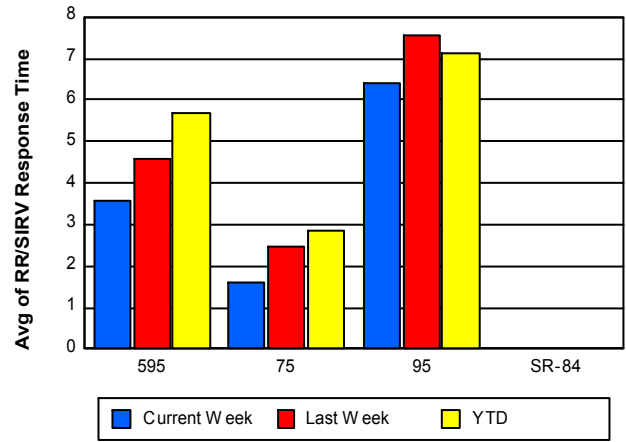
TMC Response Time



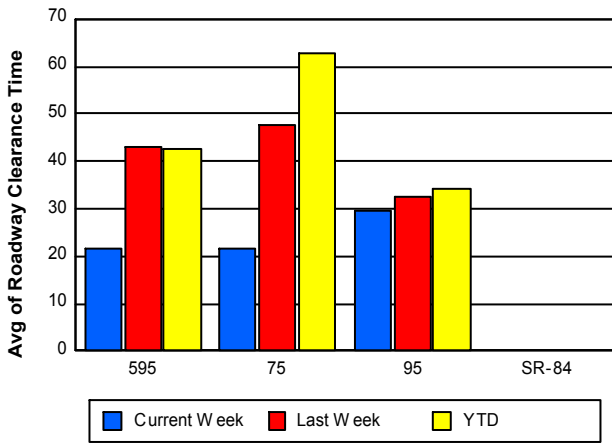
Road Ranger / SIRV Dispatch Time



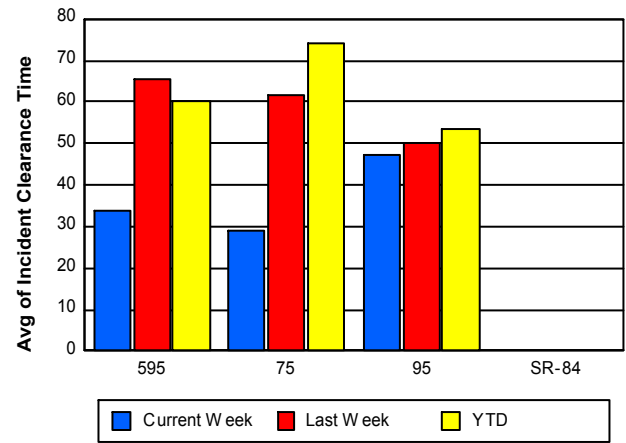
Road Ranger / SIRV Response Time



Roadway Clearance Time (2A)



Incident Clearance Time (3B)



Performance Measures by Event Type

Abandoned Vehicle

	<u>Current Week</u>	<u>Last Week</u>	<u>YTD</u>
Number of Events	182	163	4,048
Number of Incidents	0	1	6
TMC Detection (min.)	0.01	0.02	0.01
TMC Verification (min.)	1.39	1.13	0.69
TMC Response (min.)	6.41	8.60	8.67
RR Dispatch Time (min.)	1.63	1.63	2.39
RR Response Time (min.)	4.78	7.01	6.28
Event Clearance (min.)	272.14	221.23	181.74
Roadway Clearance (min.)		53.58	18.25
Incident Clearance (min.)		63.00	31.54
# of Events w/ RR/SIRV	137	125	3,306
RR/SIRV Assists	141	130	3,381
RR/SIRV Activities	145	131	3,464

Accident

	<u>Current Week</u>	<u>Last Week</u>	<u>YTD</u>
Number of Events	72	77	2,311
Number of Incidents	36	39	1,068
TMC Detection (min.)	0.11	0.19	0.21
TMC Verification (min.)	1.17	2.05	2.92
TMC Response (min.)	6.36	5.74	9.03
RR Dispatch Time (min.)	1.52	2.02	2.21
RR Response Time (min.)	4.85	3.71	6.85
Event Clearance (min.)	39.69	45.90	46.82
Roadway Clearance (min.)	29.42	34.86	38.27
Incident Clearance (min.)	47.86	56.22	60.64
# of Events w/ RR/SIRV	70	75	2,248
RR/SIRV Assists	113	120	3,129
RR/SIRV Activities	116	126	3,280

Congestion

	<u>Current Week</u>	<u>YTD</u>
Number of Events	1	1
Number of Incidents	0	0
TMC Detection (min.)	0.00	0.00
TMC Verification (min.)	0.00	0.00
TMC Response (min.)	0.00	0.00
RR Dispatch Time (min.)	0.00	0.00
RR Response Time (min.)	0.00	0.00
Event Clearance (min.)	2.58	2.58
Roadway Clearance (min.)		
Incident Clearance (min.)		
# of Events w/ RR/SIRV	1	1
RR/SIRV Assists	1	1
RR/SIRV Activities	1	1

Debris on Roadway

	<u>Current Week</u>	<u>Last Week</u>	<u>YTD</u>
Number of Events	59	47	1,346
Number of Incidents	0	2	38
TMC Detection (min.)	0.10	0.12	0.20
TMC Verification (min.)	3.81	5.75	8.17
TMC Response (min.)	3.50	7.08	9.28
RR Dispatch Time (min.)	0.74	1.67	2.01
RR Response Time (min.)	2.86	5.45	7.32
Event Clearance (min.)	7.59	13.87	13.95
Roadway Clearance (min.)		86.46	26.43
Incident Clearance (min.)		90.37	33.68
# of Events w/ RR/SIRV	58	45	1,272
RR/SIRV Assists	60	48	1,358
RR/SIRV Activities	60	50	1,372

Disabled Vehicle

	<u>Current Week</u>	<u>Last Week</u>	<u>YTD</u>
Number of Events	883	725	19,265
Number of Incidents	9	13	279
TMC Detection (min.)	0.03	0.03	0.04
TMC Verification (min.)	2.00	2.55	2.53
TMC Response (min.)	7.16	7.90	7.72
RR Dispatch Time (min.)	2.08	1.69	1.83
RR Response Time (min.)	5.23	6.28	5.98
Event Clearance (min.)	18.97	26.83	21.13
Roadway Clearance (min.)	25.92	32.34	27.45
Incident Clearance (min.)	37.96	44.74	38.21
# of Events w/ RR/SIRV	825	650	17,873
RR/SIRV Assists	854	681	18,478
RR/SIRV Activities	892	720	19,383

Emergency Vehicles

	<u>Current Week</u>	<u>YTD</u>
Number of Events	1	18
Number of Incidents	1	13
TMC Detection (min.)	0.00	0.01
TMC Verification (min.)	0.00	0.06
TMC Response (min.)		9.51
RR Dispatch Time (min.)		5.95
RR Response Time (min.)		3.19
Event Clearance (min.)	5.30	36.78
Roadway Clearance (min.)	4.20	29.23
Incident Clearance (min.)	5.30	45.84
# of Events w/ RR/SIRV	0	12
RR/SIRV Assists	0	15
RR/SIRV Activities	0	16

Other

	<u>Current Week</u>	<u>Last Week</u>	<u>YTD</u>
Number of Events	177	194	4,955
Number of Incidents	1	0	30
TMC Detection (min.)	0.01	0.01	0.02
TMC Verification (min.)	0.50	1.46	1.22
TMC Response (min.)	12.11	17.27	10.68
RR Dispatch Time (min.)	2.90	2.75	2.64
RR Response Time (min.)	9.41	14.28	8.47
Event Clearance (min.)	13.62	14.44	19.14
Roadway Clearance (min.)	38.85		27.63
Incident Clearance (min.)	46.42		36.59
# of Events w/ RR/SIRV	35	25	1,078
RR/SIRV Assists	36	26	1,102
RR/SIRV Activities	36	26	1,108

Pedestrian

	<u>Current Week</u>	<u>Last Week</u>	<u>YTD</u>
Number of Events	7	1	112
Number of Incidents	1	0	1
TMC Detection (min.)	0.10	0.00	0.34
TMC Verification (min.)	0.53	0.00	1.56
TMC Response (min.)	3.50	0.00	3.78
RR Dispatch Time (min.)	0.95	0.00	1.02
RR Response Time (min.)	2.55	0.00	2.96
Event Clearance (min.)	13.29	10.67	15.60
Roadway Clearance (min.)	17.87		17.87
Incident Clearance (min.)	29.55		29.55
# of Events w/ RR/SIRV	7	1	103
RR/SIRV Assists	7	1	108
RR/SIRV Activities	7	1	111

Police Activity

	<u>Current Week</u>	<u>Last Week</u>	<u>YTD</u>
Number of Events	3	1	72
Number of Incidents	1	1	30
TMC Detection (min.)	0.00	0.00	0.09
TMC Verification (min.)	0.00	0.00	1.57
TMC Response (min.)	0.00	4.25	12.18
RR Dispatch Time (min.)	0.00	0.17	3.56
RR Response Time (min.)	0.00	4.08	8.63
Event Clearance (min.)	4.31	14.43	64.19
Roadway Clearance (min.)	4.27	9.15	69.27
Incident Clearance (min.)	6.37	14.43	83.37
# of Events w/ RR/SIRV	1	1	33
RR/SIRV Assists	1	2	56
RR/SIRV Activities	1	2	59

Road Work - Emergency

	<u>YTD</u>
Number of Events	13
Number of Incidents	12
TMC Detection (min.)	0.06
TMC Verification (min.)	7.51
TMC Response (min.)	15.18
RR Dispatch Time (min.)	3.65
RR Response Time (min.)	11.54
Event Clearance (min.)	99.78
Roadway Clearance (min.)	99.83
Incident Clearance (min.)	102.77
# of Events w/ RR/SIRV	9
RR/SIRV Assists	13
RR/SIRV Activities	16

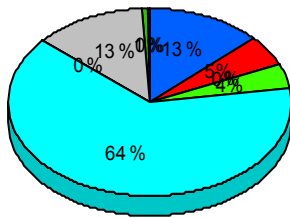
Visibility

	<u>YTD</u>
Number of Events	6
Number of Incidents	6
TMC Detection (min.)	0.57
TMC Verification (min.)	9.44
TMC Response (min.)	12.44
RR Dispatch Time (min.)	5.15
RR Response Time (min.)	7.29
Event Clearance (min.)	149.94
Roadway Clearance (min.)	259.12
Incident Clearance (min.)	149.94
# of Events w/ RR/SIRV	6
RR/SIRV Assists	15
RR/SIRV Activities	16

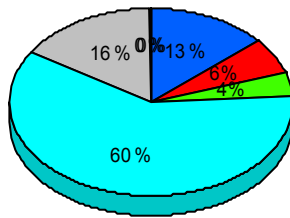
Weather

	<u>YTD</u>
Number of Events	8
Number of Incidents	0
TMC Detection (min.)	0.12
TMC Verification (min.)	10.07
TMC Response (min.)	46.01
RR Dispatch Time (min.)	9.90
RR Response Time (min.)	39.25
Event Clearance (min.)	20.92
Roadway Clearance (min.)	
Incident Clearance (min.)	
# of Events w/ RR/SIRV	2
RR/SIRV Assists	2
RR/SIRV Activities	2

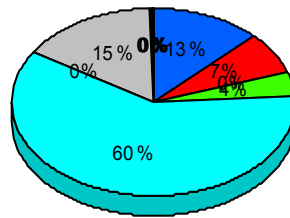
Number of Events / Event Type



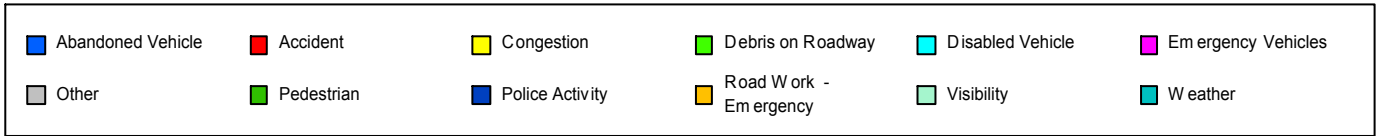
Current Week



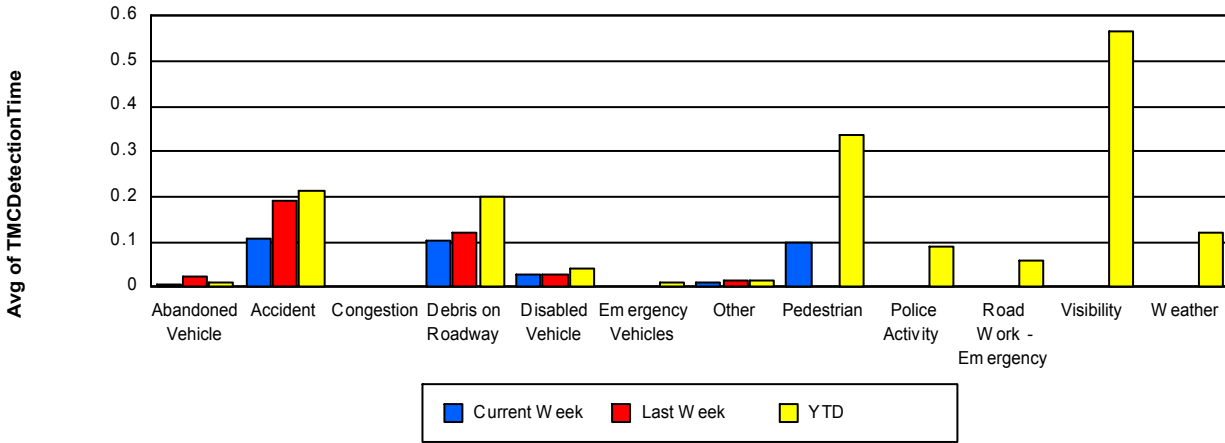
Last Week



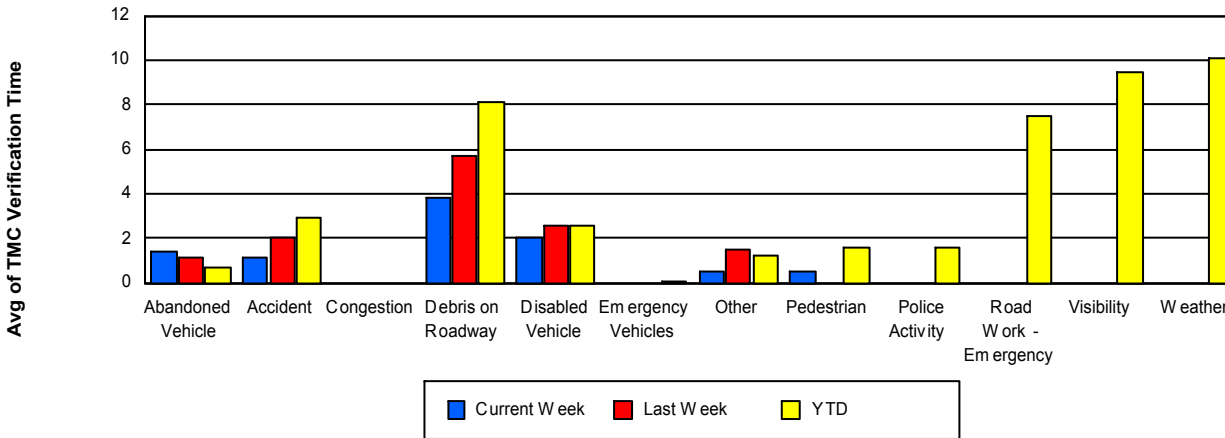
YTD



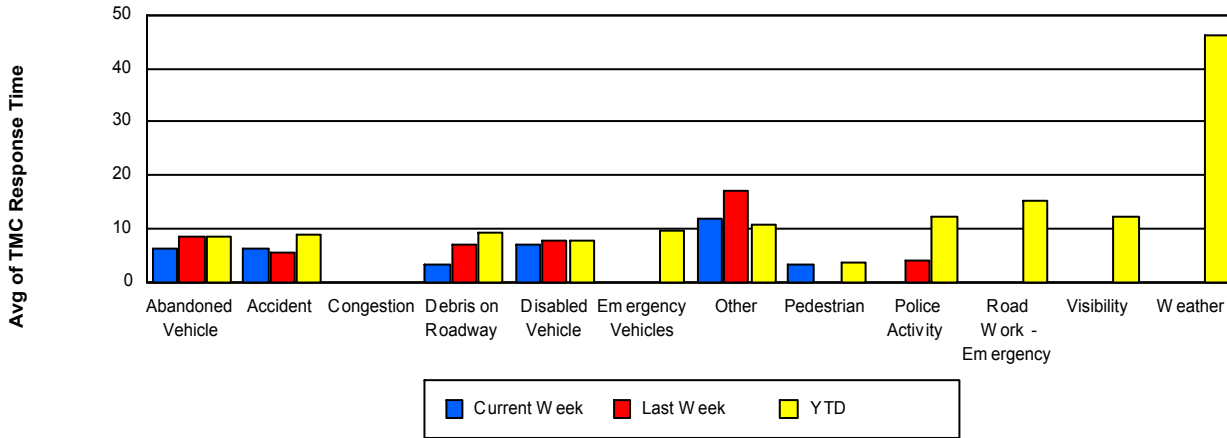
TMC Detection Time



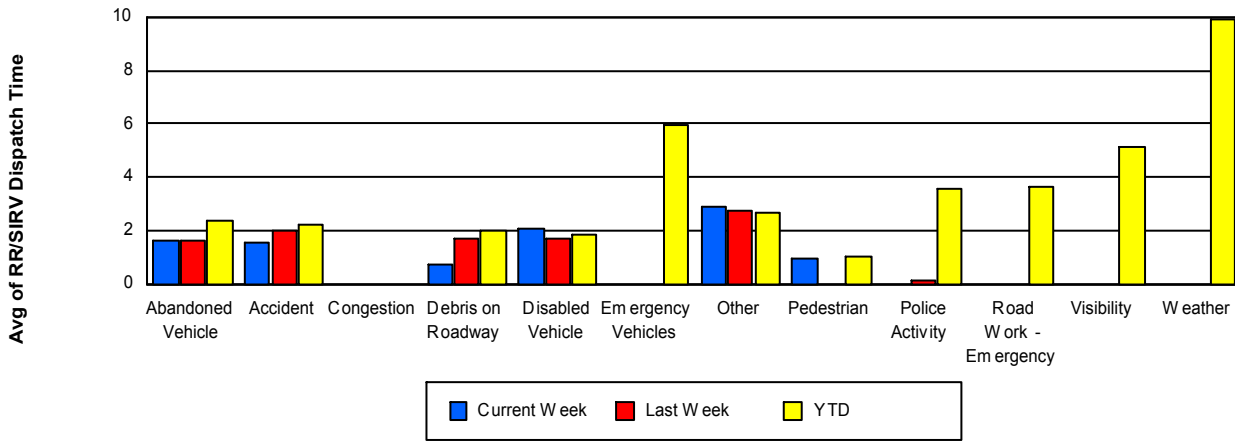
TMC Verification Time



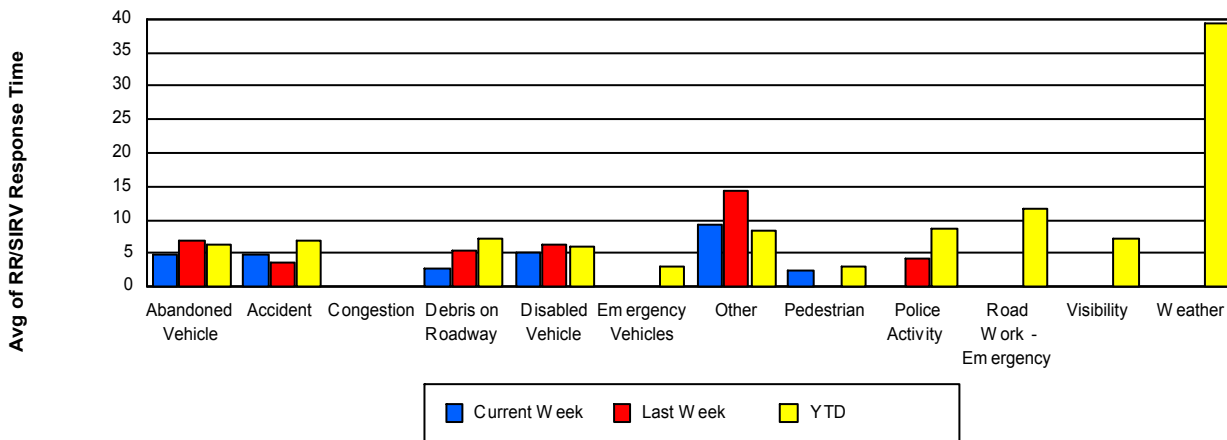
TMC Response Time



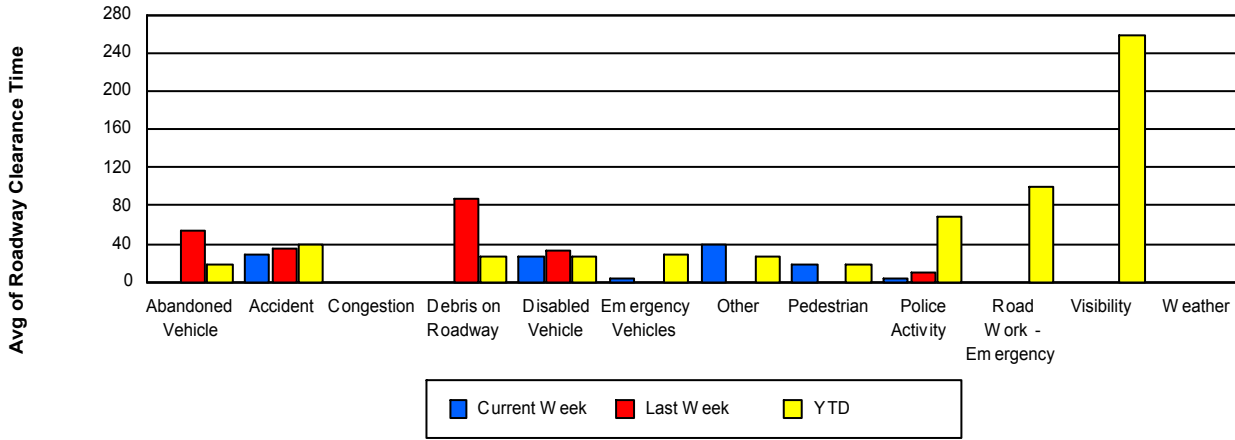
Road Ranger / SIRV Dispatch Time



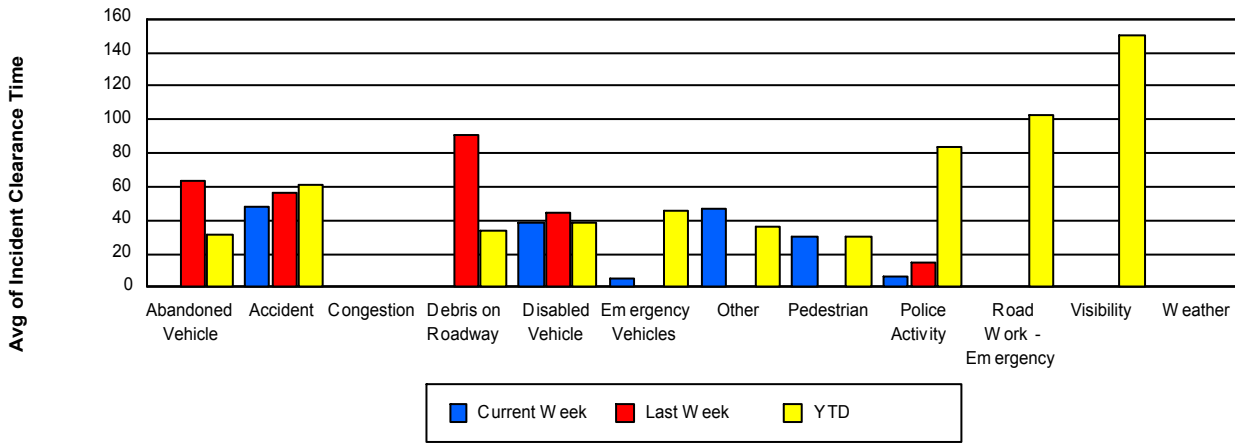
Road Ranger / SIRV Response Time



Roadway Clearance Time (2A)



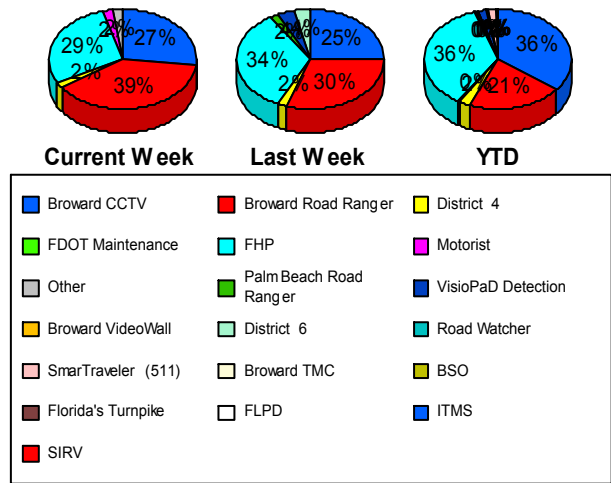
Incident Clearance Time (3B)



Incident Detection Methods

	Current Week	Last Week	YTD
Broward CCTV	13	14	529
Broward Road Ranger	19	17	308
Broward TMC	0	0	1
BSO	0	0	5
District 4	1	1	34
District 6	0	2	3
FDOT Maintenance	0	0	3
FHP	14	19	531
Florida's Turnpike	0	0	1
FLPD	0	0	1
Motorist	1	0	10
Other	1	0	1
Palm Beach Road Rang	0	1	6
Road Watcher	0	0	10
SIRV	0	0	2
SmarTraveler (511)	0	0	19
VisioPaD Detection	0	2	19
Total	49	56	1,483

Total Incidents by Detection Method

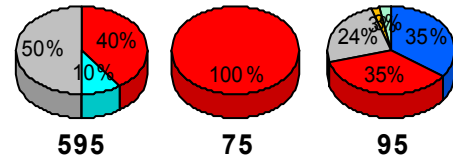


Incident Detection Methods by Roadway

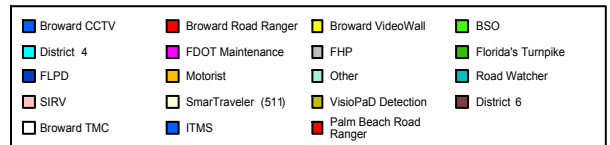
		Current Week	Last Week	YTD
595	Broward CCTV	0	2	73
	Broward Road Ranger	4	3	48
	BSO	0	0	2
	District 4	1	0	5
	FHP	5	6	96
	FLPD	0	0	1
	Motorist	0	0	2
	Road Watcher	0	0	1
	SIRV	0	0	1
	SmarTraveler (511)	0	0	3
	VisioPaD Detection	0	1	4
	Total	10	12	236
75	Broward Road Ranger	2	4	45
	BSO	0	0	1
	District 4	0	0	1
	FHP	0	0	56
	Road Watcher	0	0	1
	Total	2	4	104
95	Broward CCTV	13	12	456
	Broward Road Ranger	13	10	215
	Broward TMC	0	0	1
	BSO	0	0	2
	District 4	0	1	28
	District 6	0	2	3
	FDOT Maintenance	0	0	3
	FHP	9	13	379
	Florida's Turnpike	0	0	1
	Motorist	1	0	8
	Other	1	0	1
	Palm Beach Road Rang	0	1	6
	Road Watcher	0	0	8

Total Events by Roadway and Detection Method

Current Period Only



SR-84



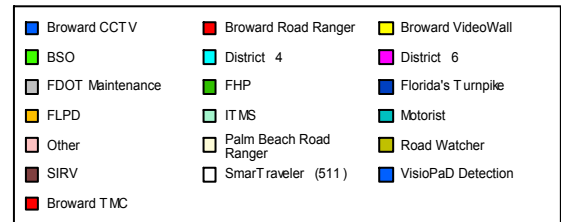
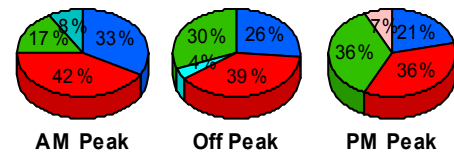
		Current Week	Last Week	YTD
95	SIRV	0	0	1
	SmarTraveler (511)	0	0	16
	VisioPaD Detection	0	1	15
	Total	37	40	1,143
Total		49	56	1,483

Incident Detection Methods by Peak Period

		Current Week	Last Week	YTD
AM Peak	Broward CCTV	4	2	120
	Broward Road Ranger	5	6	83
	District 4	0	0	8
	District 6	0	1	1
	FDOT Maintenance	0	0	1
	FHP	2	3	93
	Florida's Turnpike	0	0	1
	FLPD	0	0	1
	Motorist	1	0	5
	Palm Beach Road Rang	0	0	3
	Road Watcher	0	0	2
	SmarTraveler (511)	0	0	5
	VisioPaD Detection	0	1	5
	Total	12	13	328
Off Peak	Broward CCTV	6	8	271
	Broward Road Ranger	9	7	152
	Broward TMC	0	0	1
	BSO	0	0	1
	District 4	1	1	18
	District 6	0	0	1
	FDOT Maintenance	0	0	1
	FHP	7	12	294
	Motorist	0	0	5
	Palm Beach Road Rang	0	1	2

Total Events by Peak Period and Detection Method

Current Period Only



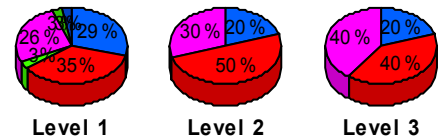
		Current Week	Last Week	YTD
Off Peak	Road Watcher	0	0	6
	SIRV	0	0	2
	SmarTraveler (511)	0	0	8
	VisioPaD Detection	0	1	10
	Total	23	30	772
PM Peak	Broward CCTV	3	4	138
	Broward Road Ranger	5	4	73
	BSO	0	0	4
	District 4	0	0	8
	District 6	0	1	1
	FDOT Maintenance	0	0	1
	FHP	5	4	144
	Other	1	0	1
	Palm Beach Road Rang	0	0	1
	Road Watcher	0	0	2
	SmarTraveler (511)	0	0	6
	VisioPaD Detection	0	0	4
	Total	14	13	383
Total	49	56	1,483	

Incident Detection Methods by Severity

		Current Week	Last Week	YTD
Level 1	Broward CCTV	10	9	323
	Broward Road Ranger	12	7	178
	BSO	0	0	2
	District 4	1	0	18
	FDOT Maintenance	0	0	1
	FHP	9	9	251
	FLPD	0	0	1
	Motorist	1	0	5
	Other	1	0	1
	Palm Beach Road Rang	0	1	4

Total Events by Severity and Detection Method

Current Period Only



Other

■ Broward CCTV	■ Broward Road Ranger	■ BSO
■ District 4	■ FDOT Maintenance	■ FHP
■ FLPD	■ Motorist	■ Other
■ Palm Beach Road Ranger	■ Road Watcher	■ SIRV
■ SmarTraveler (511)	■ VisioPaD Detection	■ District 6
■ Florida's Turnpike	■ Broward TMC	■ Broward VideoWall
■ ITMS		

		Current Week	Last Week	YTD
Level 1	Road Watcher	0	0	5
	SIRV	0	0	1
	SmarTraveler (511)	0	0	10
	VisioPaD Detection	0	1	8
	Total	34	27	808
Level 2	Broward CCTV	2	2	149
	Broward Road Ranger	5	5	89
	BSO	0	0	1
	District 4	0	1	14
	District 6	0	1	2
	FDOT Maintenance	0	0	2
	FHP	3	9	183
	Florida's Turnpike	0	0	1
	Motorist	0	0	5
	Palm Beach Road Rang	0	0	1
	Road Watcher	0	0	3
	SIRV	0	0	1
	SmarTraveler (511)	0	0	7
	VisioPaD Detection	0	1	10
	Total	10	19	468
Level 3	Broward CCTV	1	3	57
	Broward Road Ranger	2	5	41
	Broward TMC	0	0	1
	BSO	0	0	2
	District 4	0	0	2
	District 6	0	1	1
	FHP	2	1	97
	Palm Beach Road Rang	0	0	1
	Road Watcher	0	0	2
	SmarTraveler (511)	0	0	2
	VisioPaD Detection	0	0	1
	Total	5	10	207

	Current Week	Last Week	YTD
Total	49	56	1,483

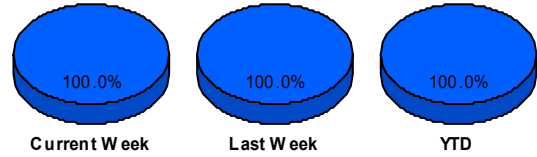
Road Ranger / SIRV Performance Measures

Road Ranger / SIRV Performance By County

RR/SIRV Responses per County

Values presented are: - Total Events with a RR/SIRV Response - Total RR/SIRV Responses, - Total Activities Performed

	Current Week	Last Week	YTD
Broward	1,134	922	25,943
	1,213	1,008	27,658
	1,258	1,056	28,828

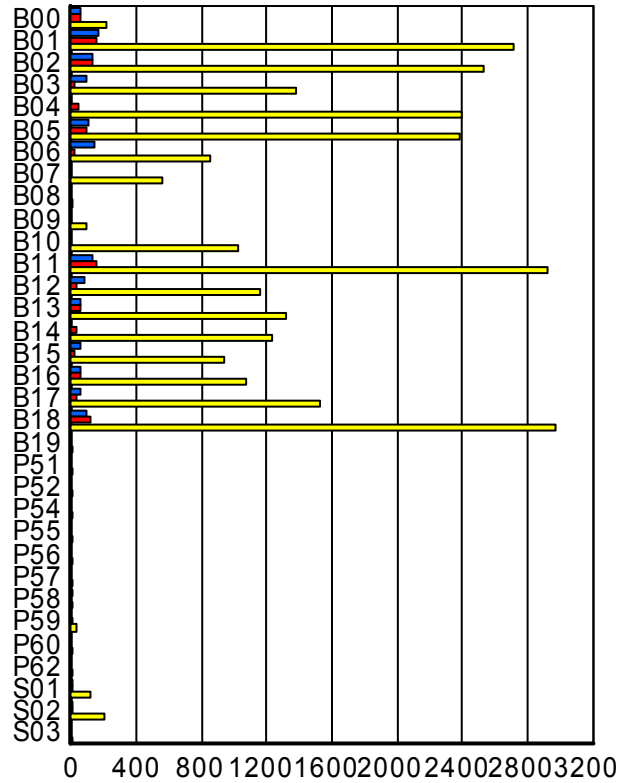


■ Broward

Road Ranger / SIRV Performance By Truck

	Current Week	Last Week	YTD
B00	58	54	211
	59	54	214
	60	56	219
B01	159	150	2,692
	160	152	2,717
	164	156	2,829
B02	132	121	2,507
	133	123	2,530
	135	131	2,651
B03	90	24	1,359
	92	24	1,380
	96	25	1,427
B04	0	49	2,365
	0	49	2,398
	0	50	2,507
B05	106	88	2,358
	108	88	2,381
	111	91	2,491
B06	137	13	849
	138	13	854
	144	14	898
B07	0	0	551
	0	0	554
	0	0	561

RR/SIRV Responses per Truck



	Current Week	Last Week	YTD
B08	0	0	1
	0	0	1
	0	0	1
B09	0	0	87
	0	0	87
	0	0	90
B10	0	0	1,006
	0	0	1,022
	0	0	1,074
B11	123	148	2,893
	123	149	2,919
	129	156	3,031
B12	75	36	1,145
	76	36	1,154
	79	37	1,205
B13	55	50	1,306
	55	50	1,318
	56	55	1,351
B14	0	31	1,216
	0	31	1,226
	0	32	1,265
B15	55	21	926
	55	21	932
	55	22	972
B16	54	49	1,060
	55	50	1,076
	66	56	1,136
B17	54	35	1,520
	54	35	1,532
	55	38	1,600
B18	95	119	2,947
	96	122	2,975
	99	126	3,081
B19	0	0	2
	0	0	2
	0	0	2
P51	0	0	6
	0	0	6
	0	0	6
P52	0	0	2
	0	0	2
	0	0	2
P54	0	0	3
	0	0	3
	0	0	5

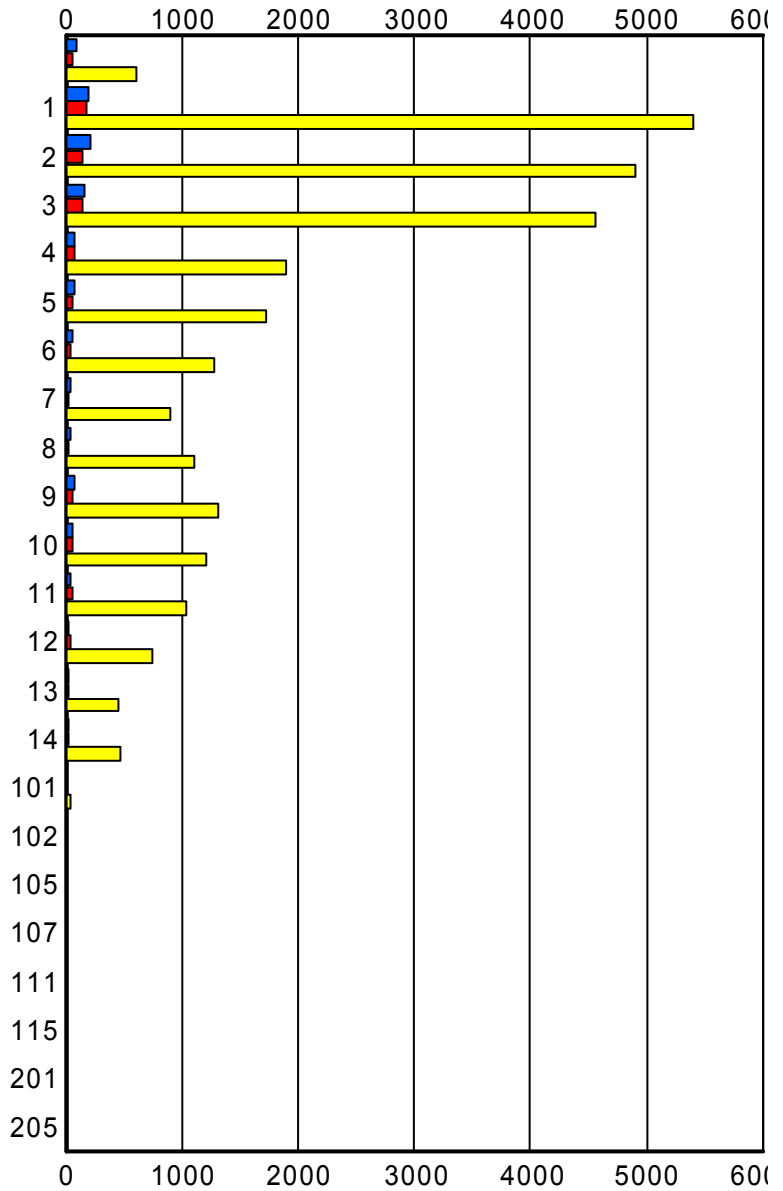
	Current Week	Last Week	YTD
P55	0	0	2
	0	0	2
	0	0	2
P56	0	0	1
	0	0	1
	0	0	1
P57	0	0	2
	0	0	2
	0	0	2
P58	1	0	12
	1	0	12
	1	0	13
P59	0	1	33
	0	1	33
	0	1	38
P60	0	0	1
	0	0	1
	0	0	1
P62	0	0	2
	0	0	2
	0	0	2
S01	3	3	111
	3	3	113
	3	3	134
S02	5	7	207
	5	7	208
	5	7	230
S03	0	0	1
	0	0	1
	0	0	1

Road Ranger / SIRV Performance By Beat

	Current Week	Last Week	YTD
	83	57	556
	92	62	605
	93	64	657
1	196	167	5,225
	202	170	5,392
	207	175	5,616
2	201	147	4,747
	205	147	4,896
	223	156	5,111
3	161	138	4,427
	166	143	4,561
	170	150	4,761
4	77	81	1,874
	77	82	1,894
	80	87	1,949
5	77	66	1,702
	77	66	1,716
	78	72	1,796
6	66	39	1,274
	66	39	1,285
	67	41	1,337
7	41	23	891
	42	23	902
	42	27	950
8	48	27	1,104
	48	27	1,108
	48	27	1,169
9	79	58	1,297
	81	59	1,308
	85	61	1,350
10	54	56	1,200
	54	57	1,212
	60	57	1,250
11	34	57	1,022
	34	59	1,037
	34	63	1,067
12	29	39	736
	29	39	746
	31	40	780
13	21	17	453
	21	17	460
	21	17	473

Values presented are:
 - Total Events with a RR/SIRV Response
 - Total RR/SIRV Responses,
 - Total Activities Performed

RR/SIRV Responses per Beat



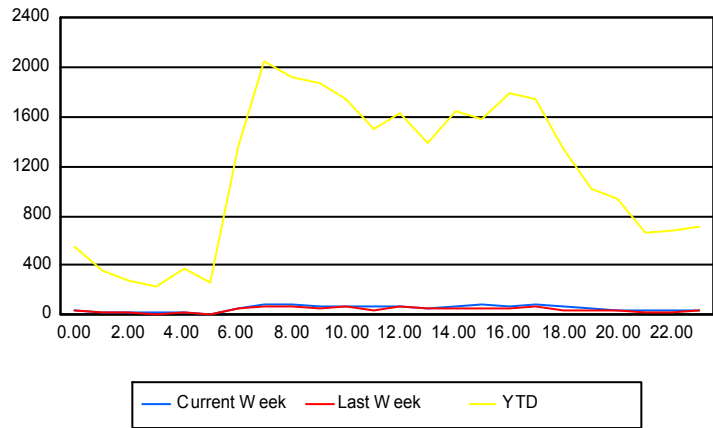
	Current Week	Last Week	YTD
14	18	17	470
	18	17	475
	18	18	493
101	1	0	43
	1	0	43
	1	0	51
102	0	0	1
	0	0	1
	0	0	1
105	0	0	1
	0	0	1
	0	0	1
107	0	0	1
	0	0	1
	0	0	1
111	0	1	12
	0	1	12
	0	1	12
115	0	0	1
	0	0	1
	0	0	1
201	0	0	1
	0	0	1
	0	0	1
205	0	0	1
	0	0	1
	0	0	1

Road Ranger / SIRV Performance By Time of Day

Values presented are:
 - Total Events with a RR/SIRV Response
 - Total RR/SIRV Responses,
 - Total Activities Performed

	Current Week	Last Week	YTD
12AM-1AM	31	28	517
	33	30	547
	35	30	567
1AM-2AM	19	20	328
	21	22	356
	23	23	373
2AM-3AM	14	18	258
	14	21	275
	15	21	283
3AM-4AM	15	7	206
	15	7	225
	15	7	236
4AM-5AM	12	12	323
	13	16	368
	14	17	376
5AM-6AM	7	11	251
	7	12	266
	7	12	278
6AM-7AM	45	44	1,260
	46	56	1,352
	46	57	1,417
7AM-8AM	75	65	1,932
	83	70	2,051
	87	73	2,128
8AM-9AM	77	65	1,799
	82	73	1,916
	85	74	2,008
9AM-10AM	69	45	1,758
	76	50	1,872
	77	54	1,941
10AM-11AM	70	59	1,646
	73	61	1,740
	74	65	1,824
11AM-12PM	56	37	1,412
	63	39	1,506
	64	42	1,577
12PM-1PM	60	58	1,542
	63	62	1,638
	64	66	1,711

Number of Responses / Hour of the Day



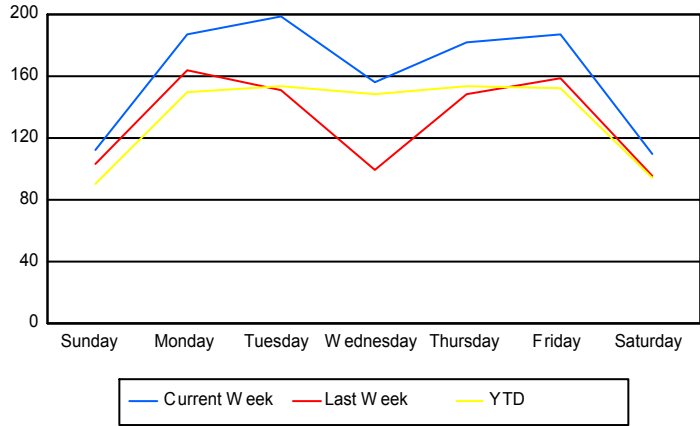
	Current Week	Last Week	YTD
1PM-2PM	55	51	1,300
	59	59	1,389
	61	60	1,465
2PM-3PM	72	55	1,531
	76	56	1,647
	81	59	1,727
3PM-4PM	70	48	1,490
	80	51	1,585
	85	55	1,643
4PM-5PM	70	55	1,678
	73	60	1,798
	76	67	1,870
5PM-6PM	74	55	1,662
	78	61	1,751
	82	66	1,828
6PM-7PM	62	38	1,253
	68	39	1,346
	70	40	1,396
7PM-8PM	54	40	967
	56	42	1,019
	57	42	1,058
8PM-9PM	37	37	902
	37	43	943
	39	43	987
9PM-10PM	30	24	611
	32	26	672
	33	28	694
10PM-11PM	28	20	637
	29	20	680
	31	21	707
11PM-12AM	32	30	680
	36	32	716
	37	34	734

Road Ranger / SIRV Performance By Day of Week

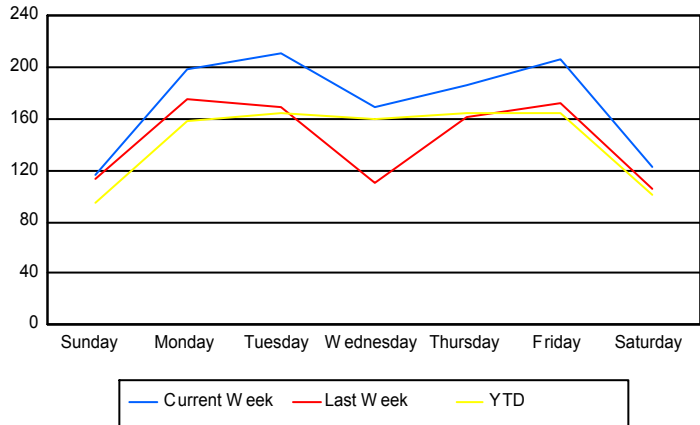
Values presented are:
 - Total Events with a RR/SIRV Response
 - Total RR/SIRV Responses,
 - Total Activities Performed

	Current Week	Last Week	YTD
Sunday	114	103	2,372
	119	113	2,505
	124	116	2,612
Monday	187	164	4,139
	199	175	4,376
	210	185	4,540
Tuesday	199	152	4,261
	211	170	4,541
	213	175	4,746
Wednesday	156	100	4,115
	169	110	4,413
	179	112	4,603
Thursday	183	149	4,246
	187	161	4,534
	197	173	4,733
Friday	187	159	4,239
	206	173	4,537
	211	179	4,712
Saturday	110	96	2,594
	122	106	2,752
	124	116	2,882

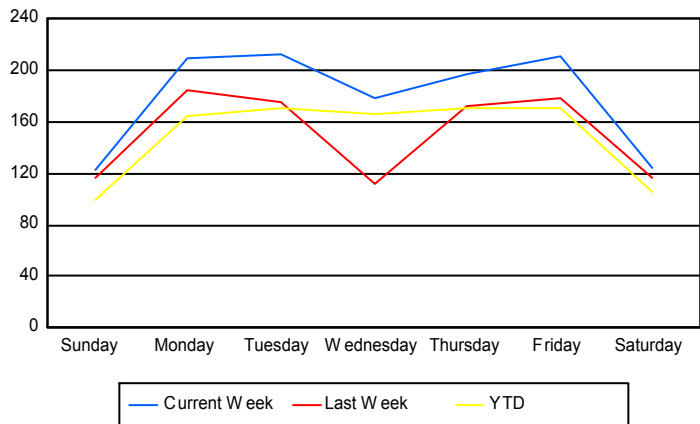
Avg # of events with a RR/SIRV Response per Day of the Week



Avg # of RR/SIRV Responses per Day of the Week



Avg # of RR/SIRV Activities Performed per Day of the Week



Road Ranger/SIRV Responses per Time of Day and Day of Week

